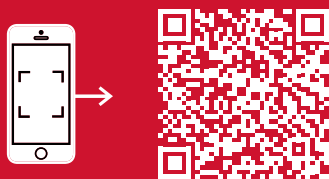


SuperPan® Tech P4 EZ

Technical data sheet



Wooden Construction and Sustainability

It contributes to the circular economy, and promotes sustainable forest management while ensuring socio-economic development in rural communities.

Aligned with the European Union efforts to reduce harmful man-made contaminants and emissions.

It has the following benefits:

- Captures and stores CO₂
- Low thermal conductivity
- Very low formaldehyde emissions



Finsa Tech

SuperPan® Tech P4 EZ

Structural board for industrial
shelving and mezzanines

Finsa

finsa.com

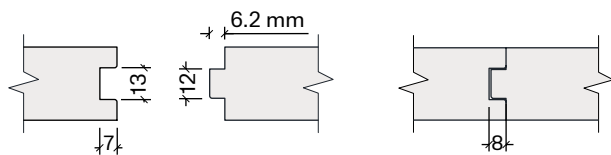
finsa.com

Construction board technical class P4

Unique solution in the market for structural panels in dry environments.

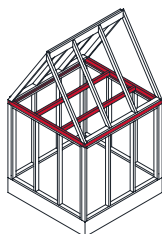
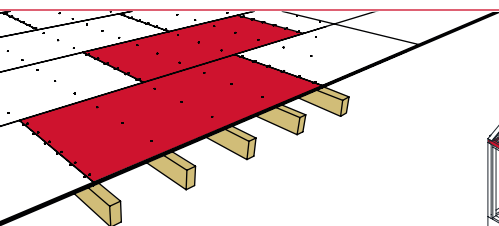
1

2



1. Tongue and groove detail of SuperPan® Tech P4 EZ TG 30 mm thick.

2. Butt joint. The tongue and groove joint of the 30 mm thick SuperPan® Tech P4 EZ TG itself leaves a 0.8 mm gap.



Span Calculations



Available to our customers is the Finsa Span Calculation software, for calculating floor and roof structures. This provides design guidance for compliance with CTE DB-SE-M for specification of both boards and beams.

SuperPan® Tech P4 EZ boards are suitable for service class 1 and use class 1 in accordance with standards EN 1995-1-1 and EN 33.



Bfl-s1/B-s1,d0

- SuperPan® Tech P4 IGN EZ

Bfl-s1/B-s2,d0

- SuperPan® Tech P4 IGN EZ Decor

*In <12mm B-s2,d0 thickness



Bfl-s1

- SuperPan® Tech P4 EZ Decor

(With anti-slip Gris I and anti-slip Granitech)



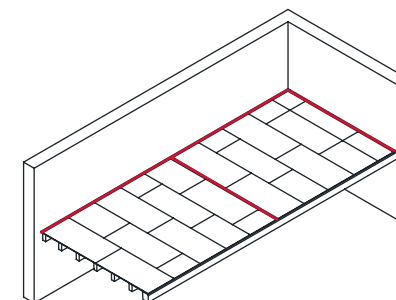
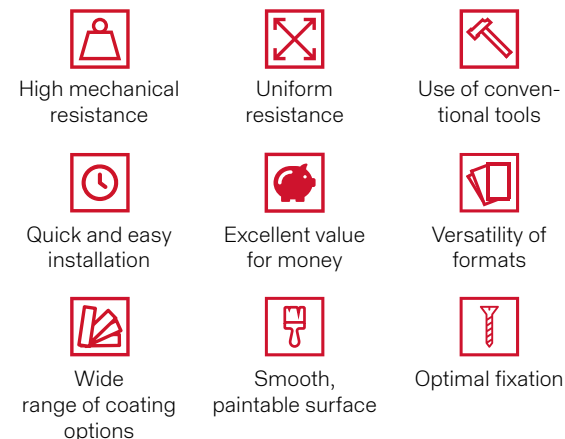
Installation recommendations



Standard pack sizing

Model	Format	Thickness
SuperPan® Tech P4 EZ TG2L	2400 x 900	30
SuperPan® Tech P4 EZ TG4		
SuperPan® Tech P4 EZ Decor TG2L Gris I Anti-slip Blanco Super		
SuperPan® Tech P4 EZ Decor TG4 Gris I Anti-slip Blanco Super		

Advantages



Applications

- Construction of industrial mezzanines
- Construction of timber frames
- Storage platforms and industrial shelving
- Renovation and renewal of spaces
- Residential construction
- Innovative building systems