

# FIBRACOLOUR **TEX** by **FINSA**

Inspiration and technical guide

# Creativity is the tool, Fibracolour is the material.

In this brochure about the Fibracolour range and the TEX range from FINSA, we collaborated with the paint manufacturer AkzoNobel Wood Coatings.

### AkzoNobel Wood Coatings

AkzoNobel Wood Coatings is the leading provider of interior wood coatings and finishes for wood-based materials. We cater for all your needs from one place. High-quality innovative products that are 100% reliable in processing for all applications in interior design. Whether it concerns furniture, flooring, kitchen or shop applications or high-quality ship interiors, our solutions are always designed as an all-round system, so that you can be sure to always achieve the perfect finish.

We are convinced that close cooperation and constant communication between our employees and our customers are essential. Our drive is to leverage our knowledge by developing innovative solutions that meet the future demands of a constantly changing market.

This collaboration resulted in inspiring lacquered samples from Fibracolour and Fibrapan TEX. These lacquered samples can be found in the promo tool “Inspiration Promotool - Laquered samples”. These samples are treated with a water-based lacquer from AkzoNobel Wood Coatings. The specific systems used are described in the paint recommendations at the back of this folder.

### Disclaimer

The lacquered samples from the promo tool are for inspiration only. By using the Fibracolour or Fibrapan TEX panels and following the steps in the paint recommendations it is possible to reproduce the effect of the samples. The result of the paint treatment depends on the method of painting, the ambient temperature and many other factors. No rights can therefore be derived from the samples and/or paint recommendations.

We encourage you to create impressive combinations between TEX panels and AkzoNobel finishes yourself. Of course we would appreciate it if you choose to share it with us.



## Fibracolour TEX Inspiration and technical guide Index



Moodboard of the Fibrapan E-Z TEX and Fibracolour Gris TEX Cemento samples from the Inspiration Promotool.  
By Barbara Medo.

04	<b>Coloured MDF range</b> Fibracolour
10	<b>Combination of coloured MDF and black HDF</b> Twincolour
14	<b>TEX range - coloured MDF with textures</b> Fibracolour TEX
20	<b>TEX range - standard MDF with textures</b> Fibrapan TEX
26	<b>TEX range - real wood veneer on a MDF baseboard with textures</b> Fibranatur TEX
34	<b>Lightweight constructive panel</b> Greenpanel - The lightweight panel
38	<b>Coloured MDF with melamine decors</b> Fibracolour + Gama Duo design collection
42	<b>Coloured MDF with real wood veneer</b> Fibracolour + Studio Natur
44	<b>Technical information</b>
46	<b>Lacquering recommendations AkzoNobel</b>
48	<b>Technical datasheets</b>

# Creativity:

The interior spaces are those most intimately related to people; They are the places that welcome us, where life happens with all its richness and variety of uses. That is why interior design always goes hand in hand with creativity: for its capacity to qualify spaces, to make them comply with the uses and functions entrusted to them, to grant them personality and identity.

# it is within you

Whether they are diaphanous or complex interior spaces, bright or with a controlled light, work or leisure, domestic or public, each space, each place, has an idea behind: your idea. Creativity is the tool you use every day and Fibracolour is the material that allows you to make your ideas come true.



Coloured  
MDF  
range

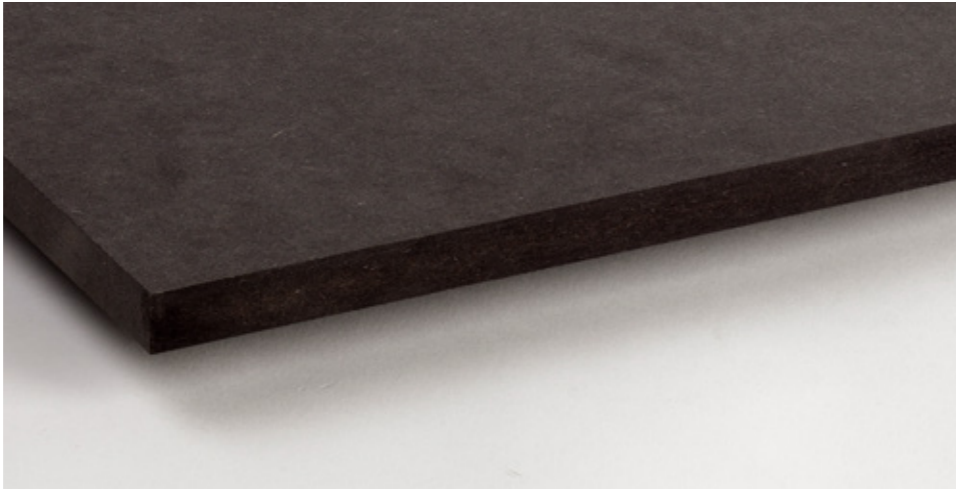
The Fibracolour range from FINSA consists of decorative wood fiber (MDF) panels that are fully coloured: The existing black and gray Fibracolour have been supplemented with yellow, blue, red and anthracite.

Fibracolour offers new possibilities in the field of decoration and interior design. This allows a wide range of aesthetic effects and the application of innovative finishes. Think of lacquering, washing, varnishing, milling, digital printing or applying textures to the top layer.

Fibracolour can also be coated with natural wood veneer or melamine, creating an attractive contrast between the top layer and the edges of the product.

Our Fibracolour sheets are of E-Z quality. This means that they have a very low formaldehyde content and comply with the most strict regulations (E05) currently applied. The black Fibracolour sheets are also available in a light version with a density of 600 kg/m3.

Fibracolour



- 1 . Fibracolour Gris E-Z
- 2 . Fibracolour Antracita E-Z
- 3 . Fibracolour Rojo E-Z
- 4 . Fibracolour Amarillo E-Z
- 5 . Fibracolour Azul E-Z
- 6 . Fibracolour Negro E-Z

Characteristics

Fibracolour is a product made with non-toxic water-based pigments and with a low concentration of formaldehyde. Therefore, it guarantees a perfect and safe coexistence with the environment and is therefore an ideal solution for use in closed spaces. The product guarantees reliability, consistency and intensity of the colors in accordance with our strict quality controls. The color is perfectly uniform over the entire panel and is resistant to natural and artificial light.

Fibracolour allows easy and quick repair of possible damage to the surface. Simply superficial sanding corrects scratches or bumps and returns the product to its original state, without perceiving tonality changes.



Applications

Fibracolour is an ideal product to be used in different applications:

Ephemeral architecture

Stands and stands  
expository

Interior design

Panels, screens and decorative  
coverings

Furniture

Household furniture, auxiliary,  
Office and child

Commercial premises

Counters and exhibitors

Technical solutions

Manufacturing acoustic elements and  
moldings, bas-relief effects, product  
design

Design

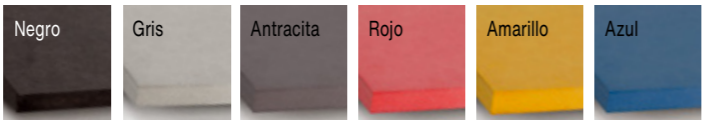
Excellent behavior as support for  
impressions with digital technology

Range

Available from a single board.  
Consult our commercial network for more information.

	Size (mm)	Thickness (mm)
Fibracolour Negro E-Z	2440 x 1220	18
	3050 x 1220	9, 12, 16, 18, 25, 38
	2850 x 2100	3, 6, 8, 10, 16, 19, 25, 30, 38
	3300 x 2100	19
	4150 x 2100	19
Fibracolour Negro Lit E-Z	3050 x 1220	18
	2850 x 2100	16, 19
Fibracolour Negro Ignifugo E-Z	3050 x 1220	18
	2850 x 2100	10, 16, 19
Fibracolour Gris E-Z	2850 x 2100	10, 19, 25
Fibracolour Antracita E-Z	2850 x 2100	10, 19, 25
Fibracolour Rojo E-Z	2850 x 2100	10, 19, 25
Fibracolour Amarillo E-Z	2850 x 2100	10, 19, 25
Fibracolour Azul E-Z	2850 x 2100	10, 19, 25

Finishes



Offices Marjal  
Rocamora Arquitectura

Alicante, Spain  
2018

Fibracolour Negro E-Z

Panel walls, doors,  
lockers and furniture

Photos: Rocamora  
Arquitectura



Sneakerbaas  
Stas Kokke

Utrecht, The  
Netherlands 2019

Fibracolour Negro E-Z

Panels and displays

Photos:  
Projectbureau-X



Expositie Bial  
Iberoamericana  
de Diseño  
Paredes Pedrosa  
Arquitectos

Madrid, Spain  
2018

Fibracolour Negro,  
Gris, Rojo, Amarillo  
& Azul E-Z

Ephemeral architecture

Photos: Luis Asín



Casa en la huerta  
WOHA by  
Antonio Maciá

Alicante, Spain  
2017

Fibracolour Amarillo E-Z

Dining table

Photos: WOHA  
(Antonio Maciá)



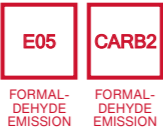
Combination  
of coloured  
HDF and  
MDF

Twincolour is a MD wood fiber board consisting of two layers of Fibracolour Negro EZ of 3 mm thickness on the outer faces and a 10 mm inner board of the Fibracolour EZ range.

Thanks to its physical characteristics, the Twincolour board is an ideal board for original and unconventional decorative solutions, such as pantographed or grooved on the outer faces of the board, highlighting the interior formed by one of the colored boards of the Fibracolour range.

Fibracolour Twincolour is a product made of non-toxic aqueous phase pigments and low formaldehyde emission (E1 classification), therefore, guarantees a perfect and safe coexistence with the environment and appears as an ideal alternative for use in closed spaces .

Twincolour



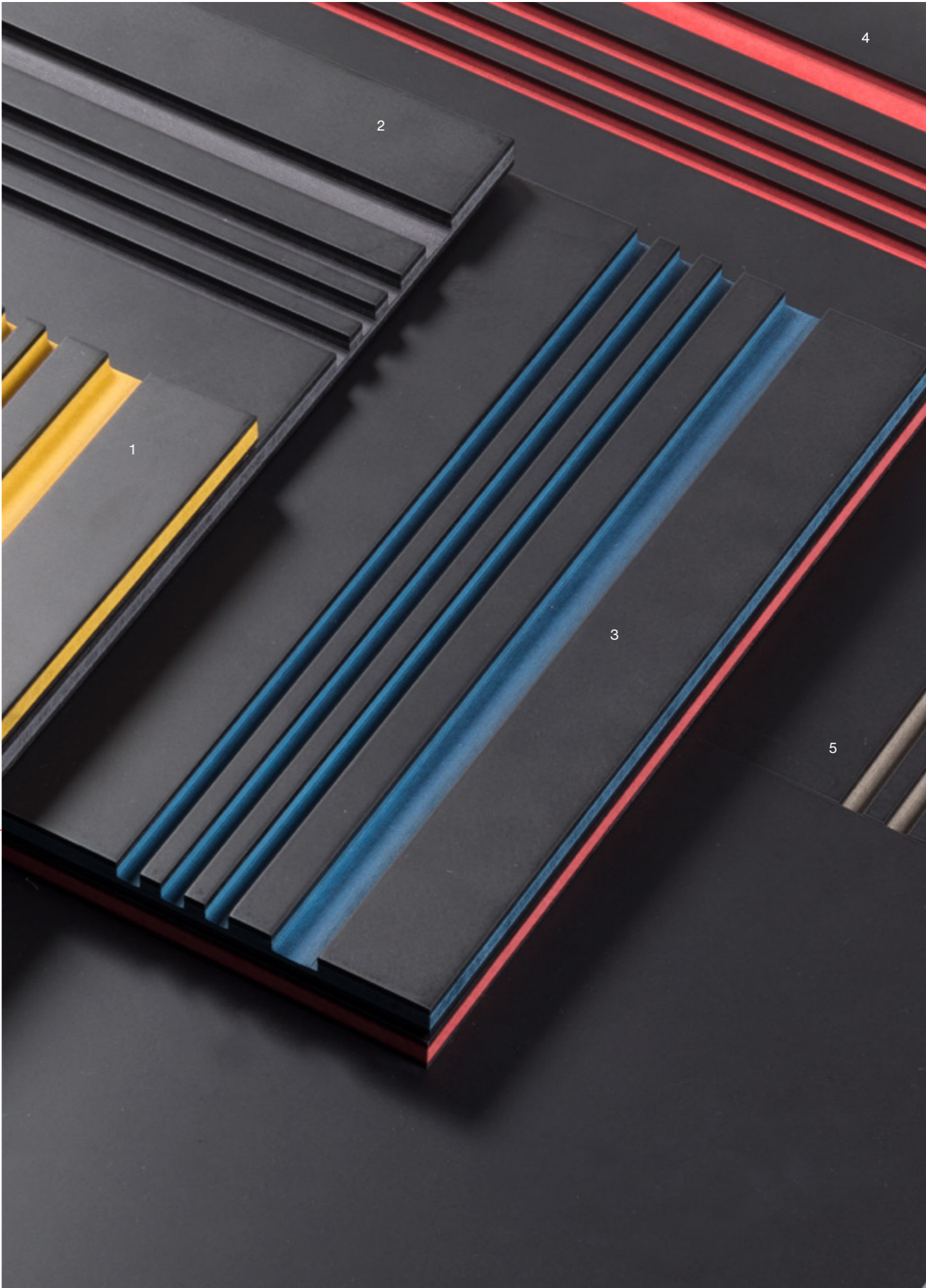
- 1 . Twincolour Amarillo E-Z
- 2 . Twincolour Antracita E - Z
- 3 . Twincolour Azul E - Z
- 4 . Twincolour Rojo E-Z
- 5 . Twincolour Gris E-Z

\*Milling suggestion

Range

Available from a single board.  
Consult our commercial network for more information.

	Size (mm)	Thickness (mm)
Twincolour Gris E-Z	2850 x 2100	16
Twincolour Antracita E-Z	2850 x 2100	16
Twincolour Rojo E-Z	2850 x 2100	16
Twincolour Amarillo E-Z	2850 x 2100	16
Twincolour Azul E-Z	2850 x 2100	16



Showroom Weststrate  
Bureau Koster Vooges

Middelburg, The  
Netherlands 2019

Twincolour Gris E-Z  
& Greenpanel E-Z

Shelves and  
decorative elements

Photos: Bureau  
Koster Vooges



Pop up Intersections  
Stone Designs

Barcelona, Spanje  
2019

Twincolour Amarillo E-Z

Panels and custom  
made furniture



Coloured  
MDF with  
embossed  
textures

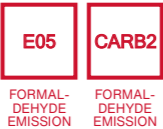
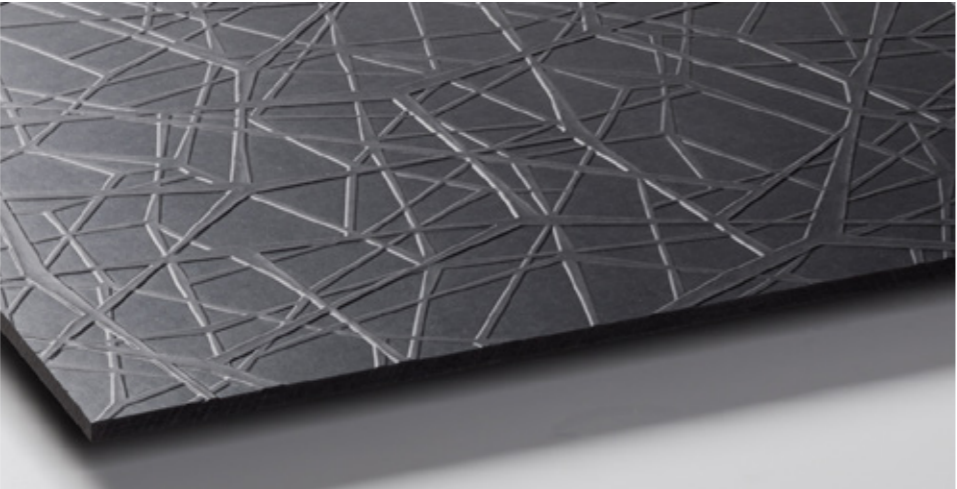
Fibracolour TEX EZ is a new range of decorative boards developed from our Fibracolour EZ, providing different textures embossed on its surface. This feature enhances its decorative qualities and, in combination with lacquers or varnishes, the possibilities of customization are unlimited.

Fibracolour TEX EZ makes it possible to enrich the material and sensorial characteristics of any interior space by means of a varied offer of surfaces in relief.

The different textures in linear, geometric or fantasy forms, offer a great versatility, to adapt to spaces or decorative applications.

The textured panels are also available in uncoloured MDF (Fibrapan TEX).

Fibracolour  
TEX



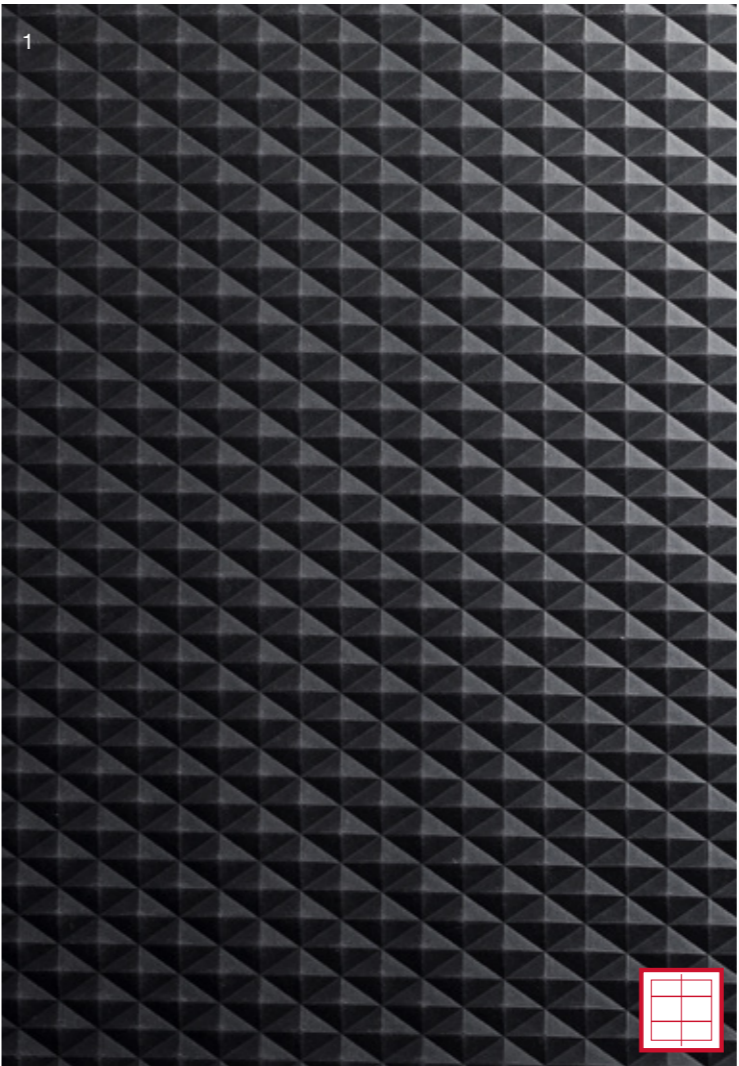
- 1. TEX Prisma
- 2. TEX Cemento
- 3. TEX Mojave
- 4. TEX Trama

Features

The technology used in the reproduction of reliefs on the surface of the board offers a compact surface, ideal for the application of different types of varnishing or lacquering with infinite effects and colors (RAL, NCS, PANTONE, etc.). The texture is only supplied on the top side.

Each of the available textures on Fibracolour EZ offers its own uniqueness with numerous possibilities. In addition to the consequent savings in machining processes on surface and time to get similar results.

All the boards synchronize the reproduction of the textures on the entire surface, which facilitates the cutting, machining or paneling in different applications.



Applications

Fibracolour EZ TEX is an ideal product to be used in different applications:

Ephemeral architecture

Stands and stands  
expository

Interior design

Paneled, screens  
and coatings

Furniture

Household furniture, auxiliary  
and childs furniture

Commercial premises

Counters and exhibitors

Technical solutions

Moldings, bas-relief effects, and  
product design

Design

Decorative solutions in stores, hotels,  
etc.

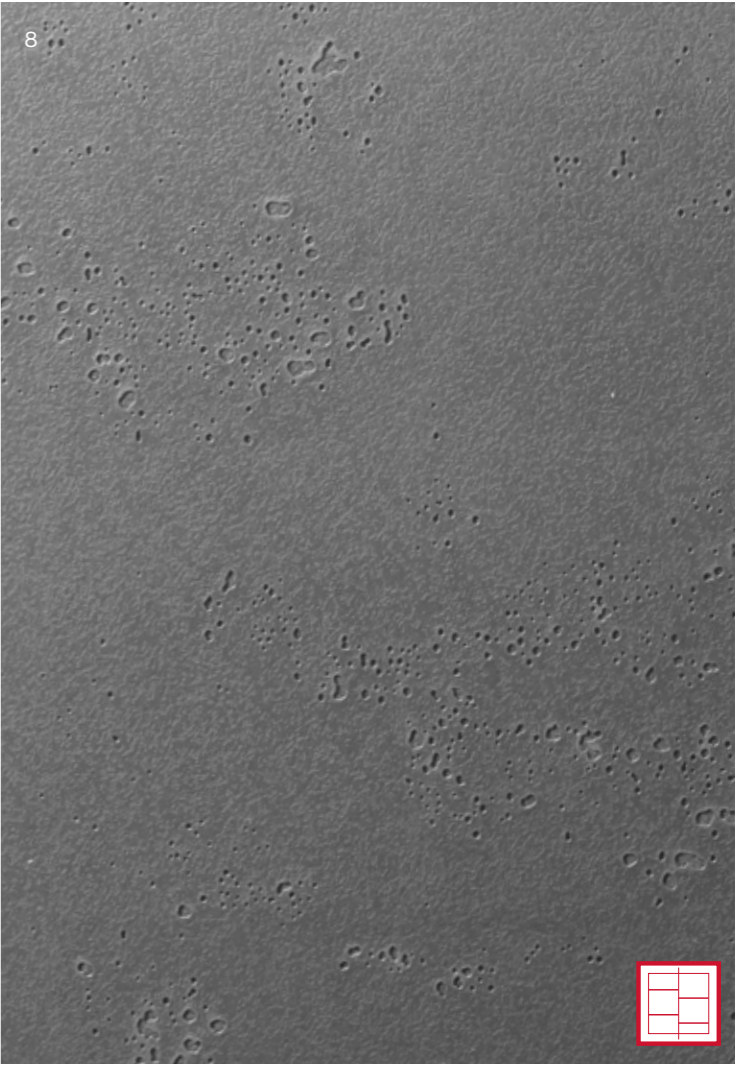
Range

Available from a single board.  
Consult our commercial network for more information.

	Size (mm)	Thickness (mm)	In sync
Fibracolour Negro E-Z TEX Prisma	2800 x 1045*	19	Yes
Fibracolour Negro E-Z TEX Fuji	2800 x 1045*	19	No
Fibracolour Negro E-Z TEX Mojave	2800 x 1045*	19	Yes
Fibracolour Negro E-Z TEX Blocks	2800 x 1045*	19	No
Fibracolour Gris E-Z TEX Cemento	2800 x 1045*	19	No
Fibracolour Negro E-Z TEX Trama	2800 x 1045*	19	Yes
Fibracolour Negro E-Z TEX Veta	2800 x 1045*	19	No
Fibracolour Negro E-Z TEX Cemento	2800 x 1045*	19	No

\*The supplied board size is 2850 x 1045 mm. The first 25 mm on both length sides of the length measurement is unusable and will therefore not be invoiced.

Finishes



Closet in master  
bedroom  
Freebird Interiors

Sheffield, UK  
2020

Fibracolour Negro  
E-Z TEX Trama

Closet doors



Pop up Intersections  
Stone Designs

Barcelona, Spain  
2019

Fibracolour Negro E-Z  
TEX Fuji & Greenpanel  
Negro E-Z

Phone booths



Regular  
MDF with  
embossed  
textures

The textures are also available on regular MDF, so called Fibrapan TEX. These boards are ideal for lacquering in any desired colour.

Range

Available from a single board.  
Consult our commercial network for more information.

	Size (mm)	Thickness (mm)	In sync
Fibrapan E-Z TEX Prisma	2800 x 1045*	19	Yes
Fibrapan E-Z TEX Fuji	2800 x 1045*	19	No
Fibrapan E-Z TEX Mojave	2800 x 1045*	19	Yes
Fibrapan E-Z TEX Blocks	2800 x 1045*	19	No
Fibrapan E-Z TEX Cemento	2800 x 1045*	19	No
Fibrapan E-Z TEX Trama	2800 x 1045*	19	Yes
Fibrapan E-Z TEX Veta	2800 x 1045*	19	No

\*The supplied board size is 2850 x 1045 mm. The first 25 mm on both length sides of the length measurement is unusable and will therefore not be invoiced.

Fibrapan  
TEX



Finishes



- 1. TEX Prisma
- 2. TEX Fuji
- 3. TEX Mojave
- 4. TEX Trama
- 5. TEX Blocks
- 6. TEX Cemento
- 7. TEX Veta





Fibrapan E-Z TEX  
lacquered in different colours.



Susana Urbano on  
Marbella Design 2020  
Susana Urbano

Marbella, Spain  
2020

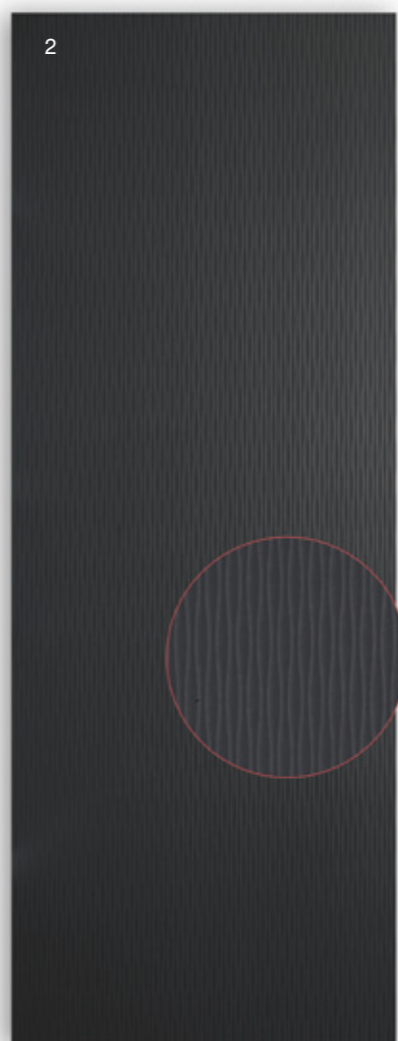
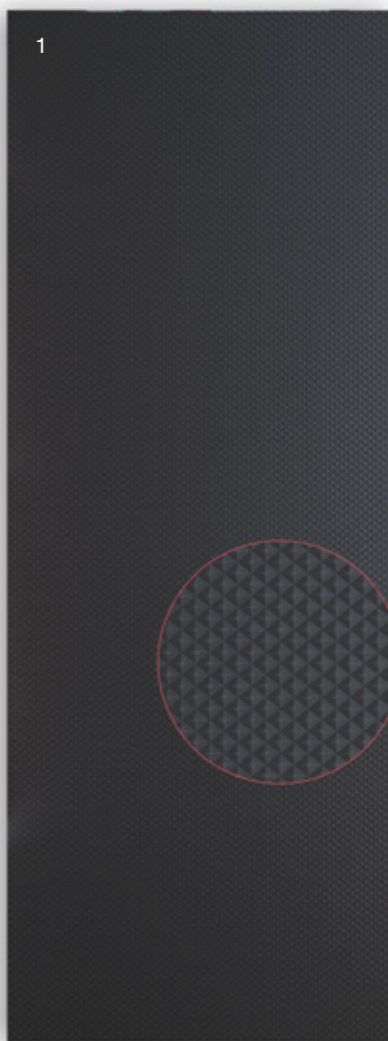
Lacquered Fibrapan  
E-Z TEX Prisma  
& Mojave

Paneling and stairs

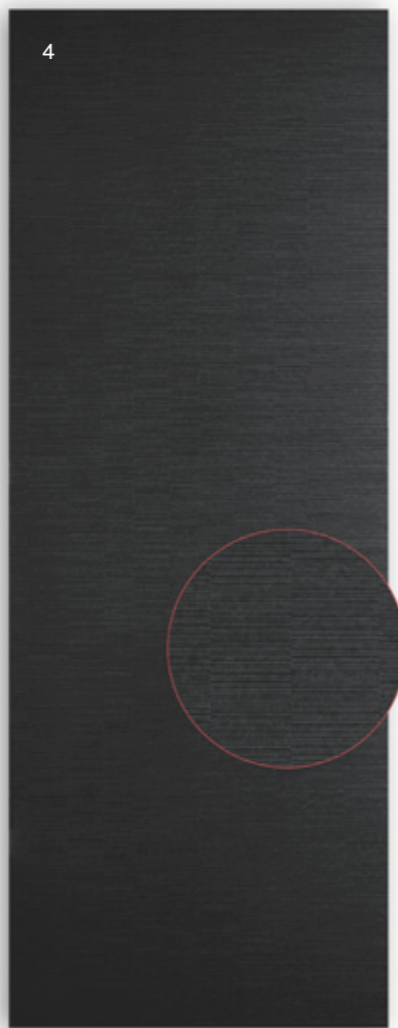
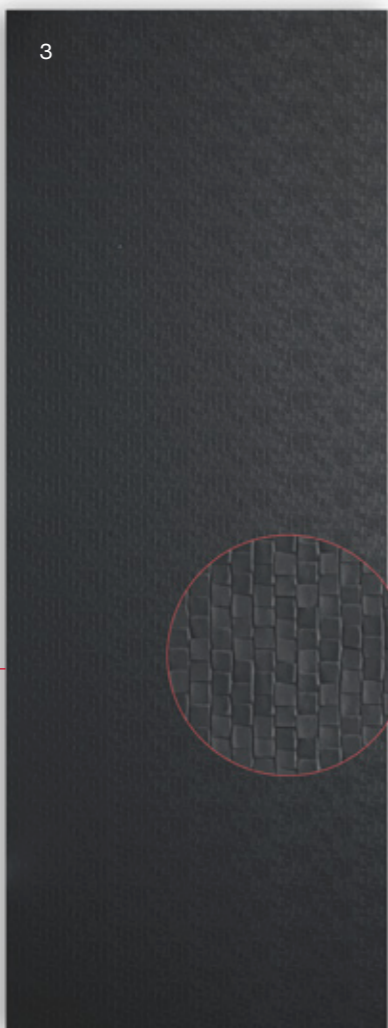
Photos:  
Paloma Pacheco



The direction of the textures shown on the full boards.

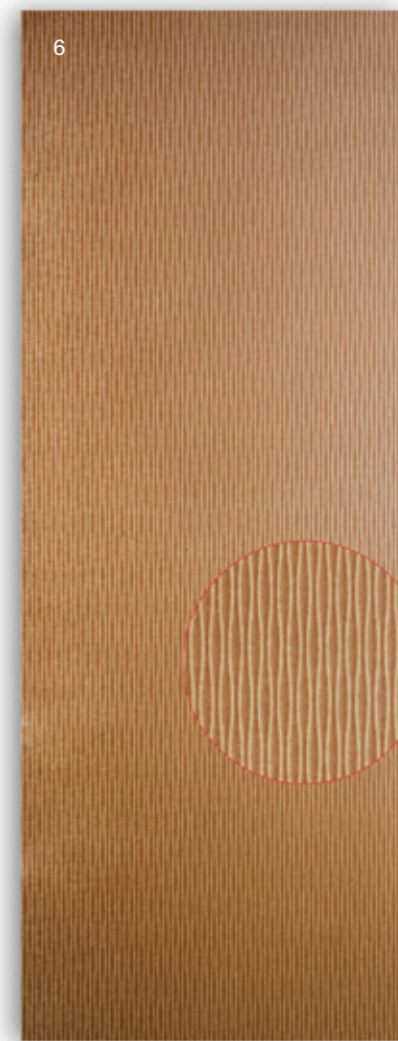
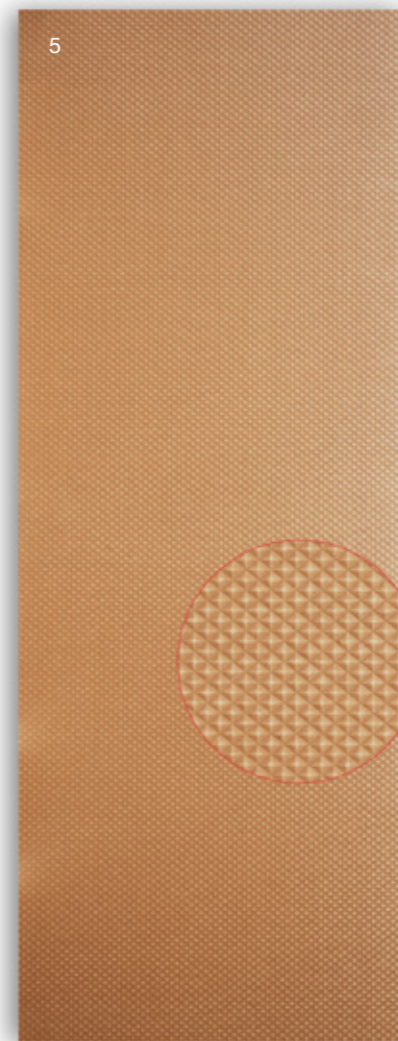


Direction texture



Full boards:

1. Fibrac. Neg. TEX Prisma
2. Fibrac. Neg. TEX Mojave
3. Fibrac. Neg. TEX Blocks
4. Fibrac. Neg TEX Fuji



Direction texture



Full boards:

5. Fibrapan TEX Prisma
6. Fibrapan TEX Mojave
7. Fibrapan TEX Blocks
8. Fibrapan TEX Fuji

Real wood veneer on MDF with embossed textures

The combination of natural wood veneer with the application of relief finishes on the surface has resulted in Fibranatur E-Z TEX. A panel that combines the warmth and naturalness of wood with a surprising finish resulting from technological innovation.

This black coloured panel (Fibracolour Negro E-Z) is enabled on both sides with the same type of wood and offers a dimensional texture on the top. Suitable for applications like vertical decoration, furniture fronts, panelling, etc. The backing uses veneer of the same type as the embossed surface, though with a more varied and irregular texture.

Fibranatur TEX



E05  
FORMAL-  
DEHYDE  
EMISSION

- 1 . Quercia Rustico Veta
- 2 . Noce Fuji
- 3 . Quercia Fuji
- 4 . Quercia Mojave
- 5 . Noce Mojave

Each of the embossed textures available on Fibranatur E-Z TEX offers its own uniqueness with numerous interior design possibilities. The technology used in the reproduction of reliefs on the surface of the board provides a compact surface, ideal for applying various types of oils or varnishes.



Applications

Fibranatur TEX is an ideal product for various applications:

Interior design

Panels, screens and decorative coverings

Furniture

Living, children and office furniture

Commercial spaces

Counters and showcases

Technical solutions

Production of acoustic elements and mouldings, relief effects, product design

Design

Decorative elements in rooms, hotels, etc.

Fibranatur E-Z TEX  
Quercia Fuji

Range

Available from a single board.  
Consult our commercial network for more information.

	Size (mm)	Thickness (mm)	In sync
Fibracolour Negro Natur E-Z TEX Roble Rústico Veta	3000 x 1220*	19	No
Fibracolour Negro Natur E-Z TEX Nogal Fuji	3000 x 1220*	19	No
Fibracolour Negro Natur E-Z TEX Roble Fuji	3000 x 1220*	19	No
Fibracolour Negro Natur E-Z TEX Roble Mojave	3000 x 1220*	19	Yes
Fibracolour Negro Natur E-Z TEX Nogal Mojave	3000 x 1220*	19	Yes

\*The supplied board size is 3050 x 1220 mm. The first 25 mm on both length sides of the length measurement is unusable and will therefore not be invoiced.

Finishes





- 1. Fibranatur E-Z TEX Roble Fuji
- 2. Fibrapan E-Z TEX Trama lacquered in sage green
- 3. Fibrapan E-Z TEX Trama lacquered in white
- 4. Fibrapan E-Z TEX Roble Mojave

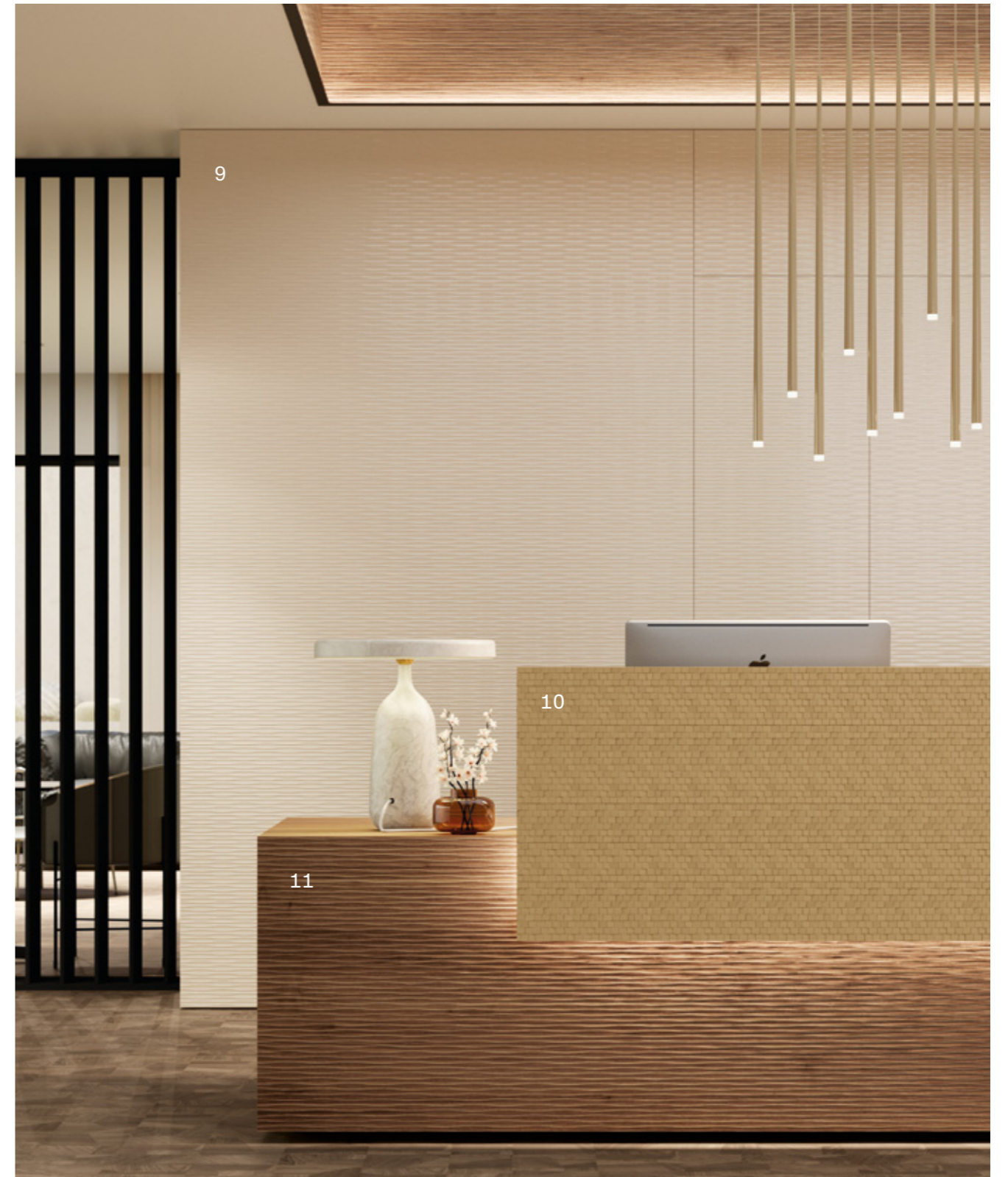


- 5. Fibranatur E-Z TEX Roble Rústico Veta
- 6. Fibrapan E-Z TEX Cemento lacquered in light grey





- 7 . Fibranatur E - Z TEX  
Nogal Fuji
- 8 . Fibrapan E - Z TEX  
Prisma lacquered in beige



- 9 . Fibrapan E - Z TEX Mojave lacquered in white
- 10 . Fibranatur E - Z TEX Nogal Mojave
- 11 . Fibrapan E - Z TEX Blocks lacquered in gold

Lightweight  
grid panel

Greenpanel Negro is an innovative ultralight panel, manufactured with Fibracolour Negro EZ, which has been developed for applications that require the combination of low weight and high strength.

Greenpanel is manufactured with thin faces of Fibracolour Negro EZ board and an interior arranged in the form of cells. The uncoated edge of the panel gives it a great aesthetic personality for its use in interior design.

Its thickness and high dimensional stability make it especially suitable for use and application in furniture, shelves, mobile panels, suspended ceilings, stands, exhibitors and ephemeral architecture.

Greenpanel is also available without black colourants and thus has the brown, regular MDF look.

Greenpanel



E05

FORMAL-  
DEHYDE  
EMISSION

CARB2

FORMAL-  
DEHYDE  
EMISSION

CA. 260  
KG/M³

DENSITY

Greenpanel Nero  
38 mm

Range

Available from a single board.  
Consult our commercial network for more information.

	Size (mm)	Thickness (mm)
Greenpanel Negro E-Z	2850 x 2100	28,38, 50
Greenpanel E-Z	3050 x 1220	38, 50, 60
	2850 x 2100	28,38, 50



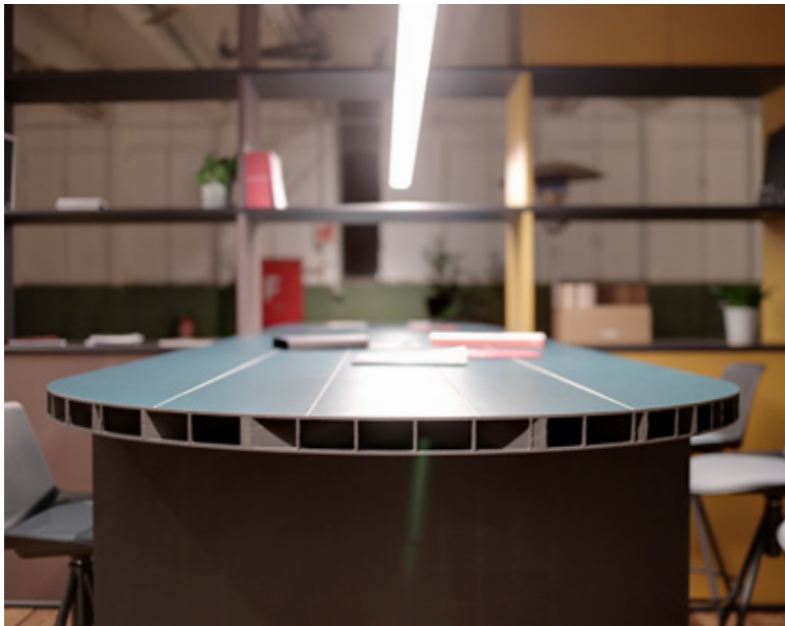


Pop up Intersections  
Enorme Estudio

Madrid, Spain  
2020

Greenpanel Negro E-Z

Tables



Stand FINSA BV  
at Prowood 2018

Ghent, Belgium  
2018

Greenpanel Negro E-Z

Stand, shelves,  
table, furniture



Coloured  
MDF with  
decors

The combination of Fibracolour with FINSA’s extensive Gama Duo range of melamines meets the challenge of expressing the character of any interior space.

The possibilities of personalization are almost unlimited by combining the color edges of the product and the wide range of melamines available for its surface, ranging from wood designs with rustic character to elegant and sophisticated structures.

Gama Duo offers a wide range of colors. From the most neutral to the most vivid and intense, without forgetting also a significant number of abstract designs inspired by textile materials, metallized, hydraulic mosaics or on surfaces such as cement or marble.

Fibracolour +  
Gama Duo  
design  
collection

Range

Available from a single board.  
Consult our commercial network for more information.

	Size (mm)	Thickness (mm)
Fibracolour Negro E-Z Plast	2850 x 2100	10, 19, 25

Baseboard :  
Fibracolour Negro E - Z

- Decors :
- 1. Luna Nueva
  - 2. Roble Hércules
  - 3. Apricot Fruit
  - 4. Old Oak
  - 5. Mármol Blanco
  - 6. Aqua Blue
  - 7. Mineral Grey
  - 8. Makers Wood
  - 9. Verde Jungla
  - 10. Roble Oasis
  - 11. Erable Musset





Hotel Riu Boavista  
Design Art Hotel

Isla Boa Vista, Cape Verde 2018

Fibracoulour Negro  
Hidrofugo E-Z Nogal  
Grove Mesura

Headboard and wardrobe

Photos: Riu



Grupotel  
Los Príncipes & Spa  
A. R. S. Concept & Design

Mallorca, Spain  
2019

Fibracoulour Negro  
Hidrofugo E-Z Pino  
Zermatt Poro Arenado

Wall finish

Photos: A. R. S.  
Concept & Design



Coloured  
MDF with  
real wood  
veneer

The range of Fibracolour decorative boards can also be combined with FINSA's Studio Natur range of natural wood veneers, combining the versatility, flexibility and functionality of industrial materials with the naturalness, warmth and elegance of wood.

The veneers of natural wood allow to appreciate the wood in all its splendor. Its combination with Fibracolour Black EZ provides great versatility for the configuration of warm and sophisticated interior spaces.

Fibracolour +  
Studio Natur

Range

Available from a single board.  
Consult our commercial network for more information.

	Size (mm)	Thickness (mm)
Fibracolour Negro E-Z Natur	3050 x 1220	13, 19

Baseboard :  
Fibracolour Negro E - Z

- Veneers :
- 1 . Ébano Kandy
  - 2 . Roble Natura Vintage
  - 3 . Roble Alba
  - 4 . Fresno Alba
  - 5 . Roble Grigio



## Technical information

### General recommendations

#### A. Storage

- It should be stored in closed rooms, ventilated and dry, protected from the sun, rain, frost and splash of chemical products, in compact piles.
- The packages will be placed on a level and flat surface, and the boards will be kept packed in conditions similar to those of the original packaging for the proper maintenance of their properties. When the packages are stacked, vertical alignment of the supports is recommended to avoid deformation.
- Avoid that the board is subjected to differentiated humidity and temperature conditions for each of its faces.
- Storage is especially critical in the case of Fibracolour Negro Ignifugo, so it is very important to keep the original packaging or very similar and avoid any humid environment to preserve its physical-mechanical properties in optimal conditions.
- It is recommended to pay special attention to dry and lateral blows, and handle the board with care to avoid damage. Especially in case of Greenpanel, given its characteristics, it can be damaged in the corners and edges, as well as inside it, and the top board will preferably be protected by a lid for proper storage and transport.

#### B. Acclimatization

- Wood and any board derived from it, for its hygroscopic properties, captures and gives moisture from the surrounding environment, depending on the temperature and humidity conditions of said environment, which causes dimensional variations.
- The pre-conditioning of the boards is recommended. Before processing, it is recommended to acclimate it to the environment for at least 2 days before use.
- In the case of commissioning (coatings, etc.), they must be stabilized at the installation site to achieve balance and minimize dimensional variations once installed.

#### C. Handling and machining

- **Handling**  
The product must be handled with due precautions, avoiding intense friction between the faces that may cause damage to the decorative surface.
- **Machining and cutting**  
For the cutting and machining of the board, the tools commonly used for other boards derived from wood can be used. It is important to assure a good result a correct sharpening and maintenance of the cutting tools, as well as the elimination of vibrations in the machine, and to follow other good practices recommended in carpentry works. It is recommended to consult your usual tool provider for more information and advice.
- It is recommended to mechanize the edge of the board avoiding the straight edges, especially with decorative melamine.

#### D. Cleaning

- Previously finished surfaces should be free of dust or dirt and sanding marks. Pre-sanding of fine grain is recommended before the application of any surface treatment such as lacquer, varnish or oils.
- The melamine board can be cleaned with a damp cloth and a neutral cleaning agent in small doses. Avoid abrasive elements and excessively acidic or basic solutions. Long exposures with damp surfaces and / or direct contact with water should be avoided.

#### E. Installation

- The method of installation and fixation is critical when it comes to ensuring adequate behavior of the boards placed on site.
- The boards, due to their hygroscopic behavior, yield and absorb moisture from the surrounding air or nearby elements, which is why it is very important to acclimatize before installation and leave expansion joints in the perimeter of the panel once installed on site, in the case of paneling.

## Technical information

### Specific recommendations Fibracolour E-Z (TEX)

- Because of the manufacturing process, the boards colored in mass can present variations of tonality, not guaranteeing a uniformity in the color between boards. For that reason it is recommended:
  - Preferably use boards from the same manufacturing lot.
  - Prior to its use, make a comparison between the boards of the same or different thicknesses to check their tonality.
- The color must always comply with the range of colorimetry parameters specified in the technical sheet. When applying a surface treatment (varnish, oil, wax, ...) we recommend carrying out a preliminary test on a representative sample to check the compatibility of the coating with the board.
- It must be taken into account that transparent finishes can modify the initial tone of the board obscuring it. We recommend the use of a sealant product before applying the surface treatment.
- Edge sealing is recommended to ensure good board performance. In the case of pigmented transparent finishes, there may be slight variation in shade between the surface of the board and the edges due to a greater absorption in the latter. The sealing of the edges mitigates this effect.
- High strength natural pigments are used in its manufacture, however direct exposure to sunlight should be avoided to avoid discoloration.
- These recommendations are also valid for the Fibracolour TEX EZ, whose tonality can also vary superficially after the pressing process.

### Specific recommendations Fibranatur E-Z TEX

#### Usage and alteration

- In the case of Fibranatur E-Z TEX, the edge can be finished with conventional machines. As a result, a manual action is always required on the edge with a sanding block or sanding pad (always in the direction parallel to that of the wood grain) to remove excess edge banding.



#### Cleaning

- It is recommended not to sand the textured finish side as this may affect the relief of the texture. Before finishing, however, it is desirable to rub with a slightly abrasive cloth to remove any possible dirt resulting from the process. The back is supplied pre-sanded, which must be sanded with a finer grit before finishing.

#### Flatness correction

- In sliding or revolving door applications for furniture fronts with large profiles (lengths greater than 1 m), it is recommended to install vertical clamps.

Lacquering recommendations Akzo Nobel

Lacquering recommendations TEX panels

System advice for a conventional transparent system, a high-load system and a high-gloss system.

More information can be found in the technical data sheets of the used products.

	Transparent system	Transparent system for rooms with a high (moisture) load, for example table tops, kitchens and bathrooms	Transparent high-gloss system (also for high loads)
Pretreatment TEX board	Clean and degrease TEX board. Step-by-step sanding with P180 / Scotch Brite. Be careful not to sand through the structure. Carefully remove sanding dust.	Clean and degrease TEX board. Step-by-step sanding with P180 / Scotch Brite. Be careful not to sand through the structure. Carefully remove sanding dust.	Clean and degrease TEX board. Step-by-step sanding with P180 / Scotch Brite. Be careful not to sand through the structure. Carefully remove sanding dust.
Apply 1st layer	Application of 100 - 140 gr / m2 Aqualit A-T260_xx (10% Hardener HWA6000 is optional). Use the instructions on the technical data sheet.	Application of 100 - 140 gr / m2 Aqualit A-IS180 with 20% HWA6000. Use the instructions on the technical data sheet.	Application of 100 - 140 gr / m2 Aqualit A-IS180 with 20% HWA6000. Use the instructions on the technical data sheet.
Drying 1st layer 21C / 65% RH	dust dry from 40 min touch dry from 1 hour sandable from 4 hours transportable from 12 hours	dust dry from 30 min touch dry from 1 hour sandable from 4 hours	dust dry from 30 min touch dry from 1 hour sandable from 4 hours
Intermediate treatment	If the 1st layer is not sanded too thoroughly, applying 1 layer is sufficient.	Intermediate sanding with P280 - P320	Intermediate sanding with P280 - P320
Apply 2nd layer		Apply 100 - 140 gr/m2 Aqualit A-T260_xx with 10% hardener HWA6000.	Apply 100 - 140 gr/m2 Aqualit A-T280_90 with 20% hardener HWA6000.
Drying 2nd layer 21C / 65% RH		dust dry from 40 min touch dry from 1 hour sandable from 4 hours transportable from 12 hours	dust dry from 40 min touch dry from 1 hour sandable from 4 hours transportable from 12 hours

	Opaque satin gloss system	Opaque deep matt system humid environment
Pretreatment TEX board	Clean and degrease TEX board. Step-by-step sanding with P120 / P 150 / P180 / Scotch Brite. Be careful not to sand through the structure. Carefully remove sanding dust.	Clean and degrease the Tex panel. Step-by-step sanding operation with P120 / P 150 / P180 / scotch brite. Be careful not to sand the structure. Carefully remove sanding dust.
Apply 1st layer	Application of 120 - 300 gr / m2 AqualitColor AC-IP360 (10% HWA6000 is optional; recommended with use in humid environment). Use the instructions on the technical data sheet.	Application of 120 - 300 gr/m2 Aqualit-Color AC-IP360 (10% HWA6000 optional; recommended when used in wet areas).
Drying 1st layer 21C / 65% RH	dust dry from 30 min touch dry from 2 hour sandable from 6 hours	dust dry from 30 min touch dry from 2 hour sandable from 6 hours
Interim treatment	Pretreat with AqualitColor AC-IP360 (hardener optional) until a closed, even surface is formed. Final sanding of the primer with P280 - P320.	Intermediate sanding with P280 - P320
Apply 2nd layer	Application of 100 - 120 gr/m2 AqualitColor AC-T450_30 (10% Hardener HWA6000 is optional).	Application of 100 - 140 gr/m2 Aqualit A-T260_xx with 10% Hardener HWA6000.
Drying 2nd layer 21C / 65% RH	dust dry from 40 min touch dry from 1 hour sandable from 4 hours transportable from 12 hours	dust dry from 40 min touch dry from 1 hour sandable from 4 hours transportable from 12 hours
Interim treatment	x	If painting takes place between 4 hours and 24 hours after applying the 2nd layer, intermediate sanding is not necessary. If you wait longer, a sanding movement is necessary again (P400).
Apply 3rd layer	x	Application of 100 - 140 gr/m2 Aqualit A-T260_05 with 10% Hardener HWA6000.
Drying 3rd layer 21C / 65% RH	x	dust dry from 40 min touch dry from 1 hour sandable from 4 hours transportable from 12 hours

Lacquering recommendations Akzo Nobel

Lacquered samples Inspiration Promotool

The samples from the inspiration tool were treated with water-based sealers, primers and topcoat (Aqualit & AqualitColor) according to the systems described on the left. Before use, we also point out that you should read the technical data sheets of the relevant products.

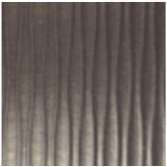
Fibracolour Negro E-Z TEX Fuji

Lacquered according to transparent system with sealer Aqualit A-IS180 and topcoat Aqualit A-T260\_20.



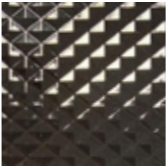
Fibracolour Negro E-Z TEX Mojave

Lacquered according to transparent system with sealer Aqualit A-IS180 and topcoat Aqualit A-T260\_05.



Fibracolour Negro E-Z TEX Prisma

Lacquered according to transparent high-gloss system with sealer Aqualit A-IS180 and topcoat Aqualit A-T280\_90.



Fibracolour Negro E-Z TEX Blocks

Lacquered according to an opaque system with sealer Aqualit A-IS180 and metallic paint Aqualit AC-E451\_GOLD. Additionally: After the opaque system, sand through with grit size P180 and topcoat with Aqualit A-T280\_90 according to transparent system.



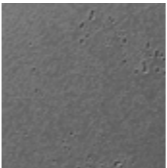
Fibrapan E-Z TEX Prisma

Lacquered according to the opaque system with pigmented primer AqualitColor AC-IP360, pigmented paint AqualitColor AC-T450\_30 in the color of the year 2021 “Brave Ground” and transparent topcoat Aqualit A-T260\_05.



Fibracolour Gris E-Z TEX Cemento

Lacquered according to transparent system with topcoat Aqualit A-T260\_05.



Fibrapan E-Z TEX Fuji

Lacquered according to the opaque system with pigmented primer AqualitColor AC-IP360 and topcoat AqualitColor AC-T450\_30 in the color “Urban Taupe”.



Fibrapan E-Z TEX Mojave

Lacquered according to opaque system with pigmented primer AqualitColor AC-IP360 and colored lacquer AqualitColor AC-T450\_30. In addition: After the opaque system, carefully sand through with grit size P180 and top coat with lacquer Aqualit A-T260\_05 according to transparent system.



Fibrapan E-Z TEX Blocks

Lacquered according to the opaque system with pigmented primer AqualitColor AC-IP360 and colored lacquer AqualitColor AC-T450\_30 in the color “RAL 9016”.



Data-sheets



FIBRACOLOUR E-Z (1)(2)  
MDF colourized black



Test	Properties	2-2.5	>2.5-4	>4-6	>6-9	>9-12	>12-19	>19-30	>30-40	Thickn. (mm)
EN 323	Density (*)	890/850	850/825	820/800	790/750	750/740	740/710	710/700	690/680	kg/m³
EN 319	Internal bond	0.65	0.65	0.65	0.65	0.60	0.55	0.55	0.50	N/mm²
EN 310	Bending resistance	23	23	23	23	22	20	18	18	N/mm²
EN 310	Modulus of elasticity	-	-	2700	2700	2500	2200	2100	2000	N/mm²
EN 317	24h water swelling	45	35	30	17	15	12	10	8	%
EN 322	Humidity	7 ±3	7 ±3	7 ±3	7 ±3	7 ±3	7 ±3	7 ±3	7 ±3	%
Tolerances										
EN 324-1	Thickness	±0,15	±0,15	±0,15	±0,2	±0,2	±0,2	±0,3	±0,3	mm
EN 324-1	Length and width	±2, máx 5	±2, máx 5	±2, máx 5	±2, máx 5	±2, máx 5	±2, máx 5	±2, máx 5	±2, máx 5	mm/m
EN 324-2	Squareness	±2	±2	±2	±2	±2	±2	±2	±2	mm/m



FIBRACOLOUR NEGRO IGNIFUGO E-Z (1)(2)(3)(4)  
MDF colourized black fire retardant



Test	Properties	10-12	>12-19	Dikte (mm)
EN 323	Density (*)	860/820	800/780	kg/m³
EN 319	Internal bond	0.6	0.55	N/mm²
EN 310	Bending resistance	22	20	N/mm²
EN 310	Modulus of elasticity	2500	2200	N/mm²
EN 317	24h water swelling	15	12	%
EN 322	Humidity	7 ±3	7 ±3	%
EN 13501-1	Fire class	B-s2,d0	B-s2,d0	Euroclass
Tolerances				
EN 324-1	Thickness	±0,2	±0,2	mm
EN 324-1	Length and width	±2, máx 5	±2, máx 5	mm/m
EN 324-2	Squareness	±2	±2	mm/m

Data-sheets



FIBRACOLOUR E-Z GRIS / AMARILLO / ANTRACITA / AZUL / ROJO (1)(2)  
MDF colourized



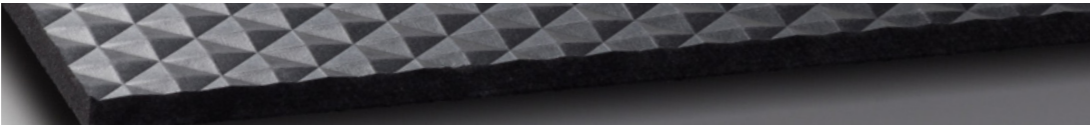
Test	Properties	10-12	>12-19	>19-30	Thickn. (mm)
EN 323	Density (*)	740/730	695/650	650/640	kg/m³
EN 319	Internal bond	0.6	0.55	0.55	N/mm²
EN 310	Bending resistance	22	20	18	N/mm²
EN 310	Modulus of elasticity	2500	2200	2100	N/mm²
EN 317	24h water swelling	15	12	10	%
EN 322	Humidity	7 ±3	7 ±3	7 ±3	%
Tolerances					
EN 324-1	Thickness	±0,2	±0,2	±0,3	mm
EN 324-1	Length and width	±2, máx 5	±2, máx 5	±2, máx 5	mm/m
EN 324-2	Squareness	±2	±2	±2	mm/m

(\*) This data is considered indicative

1. These physical-mechanical values meet / improve the values established in the European Standard EN 622-5: 2009 Table 3: Requirements of the boards used in dry environment.
2. It has a certificate of conformity with phase 2 of CARB formaldehyde emission and with the US EPA TSCA Title VI.
3. Meets the requirements of Class E1 (EN-ISO 12460-5) defined in the European Standard EN 622-1: 2003.
4. It has a certificate of verification of CE performance certificate issued by AENOR with nº 099 / CPR / A65 / 0031.

Due to the continuous development of the product and the rules by which it is governed, some parameters may undergo modifications. For more information, or the download of the complete technical sheets, consult the web [www.finsa.com](http://www.finsa.com)

Data-sheets



FIBRAPAN E-Z TEX / FIBRACOLOUR E-Z TEX  
MDF with embossed textures



Test	Properties	Veta	Blocks	Cemento	Fuji	Mojave	Prisma	Trama	Unit
EN 318	Dimensional movement: length/width	0.4	0.4	0.4	0.4	0.4	0.4	0.4	%
EN 318	Dimensional movement: thickness	4	4	4	4	4	4	4	%
Tolerances									
EN 324-1	Thickness	Nominal thickness ± 0,5							mm
EN 324-1	Length and width	±2, max 5							mm/m
EN 324-1	Squareness	±2	±2	±2	±2	±2	±2	±2	mm/m
EN 324-1	Edge straightness	±1,5	±1,5	±1,5	±1,5	±1,5	±1,5	±1,5	mm/m
-	Alignment of texture	1	1	1	1	1	1	1	mm/m
-	Max. depth texture	0,8 ± 0,2	1,8 ± 0,3	0,5 ± 0,2	0,6 ± 0,2	0,6 ± 0,2	0,9 ± 0,2	0,5 ± 0,2	mm
Properties colour tone									
CIE 1976 (CIELAB)	Brightness on faces (L*)	50≤L*≤56	29≤L*≤35	35≤L*≤41	29≤L*≤35	26≤L*≤32	33≤L*≤42	50≤L*≤50	-
CIE 1976 (CIELAB)	Red-green coordinate on faces (A*)	4≤A*≤10	-6≤A*≤0	0≤A*≤4	-2≤A*≤2	-2≤A*≤2	25≤A*≤33	0≤A*≤4	-
CIE 1976 (CIELAB)	Yellow-blue coordinate on faces (B*)	31≤B*≤39	-8≤B*≤-2	4≤B*≤10	0≤B*≤4	-2≤B*≤2	11≤B*≤17	4≤B*≤10	-

(\*) Length / Width

Formaldehyde

Very low-emission board: ≤ 0.05 ppm EN 7171-1  
EPA TSCA TITLE VI / CARB P2 certified.

Fire class

D-s2, d0. Available in fire retardant version, pending classification.

Product aspects

- Only embossed on one side, always on MDF support.
- Color differences in the surface can be seen on the embossed face.
- The color of the textured product changes from the color cap and may vary with the finish.
- Because it is an asymmetrical product, we cannot guarantee warping / sagging values.
- Stamped coordinated: in Mojave, Trama and Prisma finishes (the pattern starts on all boards at the same point).

Operating recommendations

- It should always be covered and kept on a level surface.
- The humidity for optimal storage condition is 65%, drier or humid environments should be avoided.
- Under no circumstances should there be direct contact with water.
- The stud carriers must always be aligned with the vertical.
- Do not stack more than 4 layers under any circumstances.
- If the packaging is damaged during handling, it must be repackaged for proper product preservation.
- Before use, saw a clean cut on both sides of the 25mm length.

Usage recommendations

Recommended for indoor use in a dry environment.

Lacquering recommendations

For handling and finishing recommendations, check the information on the previous pages in this brochure.

Data-sheets



FIBRANATUR E-Z TEX  
Real wood veneer on MDF with embossed textures



Test	Properties	Veta	Fuji	Mojave	Unit
EN 318	Dimensional movement: length/width	0.4	0.4	0.4	%
EN 318	Dimensional movement: thickness	6	6	6	%
Tolerances					
EN 324-1	Thickness	Nominal thickness ±0,5			mm
EN 324-1	Length and width	±2, max 5			mm/m
EN 324-1	Squareness	±2	±2	±2	mm/m
EN 324-1	Edge straightness	±1,5	±1,5	±1,5	mm/m
-	Alignment of texture	1	1	1	mm/m
-	Max. depth texture	0,8 ± 0,2	0,5 ± 0,2	0,5 ± 0,2	mm

Formaldehyde

Very low-emission board: ≤ 0.05 ppm EN 7171-1  
EPA TSCA TITLE VI / CARB P2 certified.

Fire class

D-s2, d0. Available in fire retardant version, pending classification.

Product aspects

- Only embossed on one side, always on MDF support.
- Color differences in the surface can be seen on the embossed face.
- The color of the textured product changes from the color cap and may vary with the finish.
- Because it is an asymmetrical product, we cannot guarantee warping / sagging values.
- Stamped coordinated: in Mojave, Trama and Prisma finishes (the pattern starts on all boards at the same point).

Operating recommendations

- It should always be covered and kept on a level surface.
- The humidity for optimal storage condition is 65%, drier or humid environments should be avoided.
- Under no circumstances should there be direct contact with water.
- The stud carriers must always be aligned with the vertical.
- Do not stack more than 4 layers under any circumstances.
- If the packaging is damaged during handling, it must be repackaged for proper product preservation.
- Before use, saw a clean cut on both sides of the 25mm length.

Usage recommendations

Recommended for indoor use in a dry environment.

Lacquering recommendations

For handling and finishing recommendations, check the information on the previous pages in this brochure.

# FIBRACOLOUR **TEX**

**FINSA** export department  
Carretera N-550, km 57. Aptdo. 127  
15707 Santiago de Compostela  
Spain

**T** +34 981 05 00 33  
**M** export@finsa.es  
**W** www.finsa.es

No rights can be derived from the contents of this catalog . V1 . Apr 2021 .



# **FINSA**